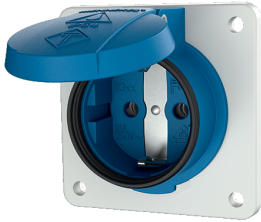


Presca da pannello SCHUKO®

Articolo 11331F

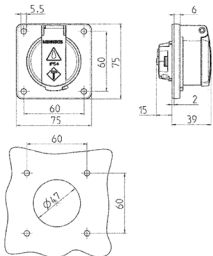


- for portable use
- with front gasket
- with hinged lid
- for easy installation in a cable duct or an enclosure
- 3 screw terminals as connecting terminals 1.5 – 2.5 mm²

Specifiche tecniche

| | |
|----------------------------|-----------------|
| Corrente | 16 A |
| Poli | 2 p+T |
| Voltaggio | 230 V |
| Tecnologie di collegamento | morsetti a vite |
| Contatti | standard |
| Grado di protezione | IP 54 |
| Chiusura di sicurezza | false |
| Flangia | 75x75 mm |
| Fori di fissaggio | 60x60 mm |
| Peso | 80 g |

Disegni e dimensioni



Disegno
1 MB 592

Dim. in mm